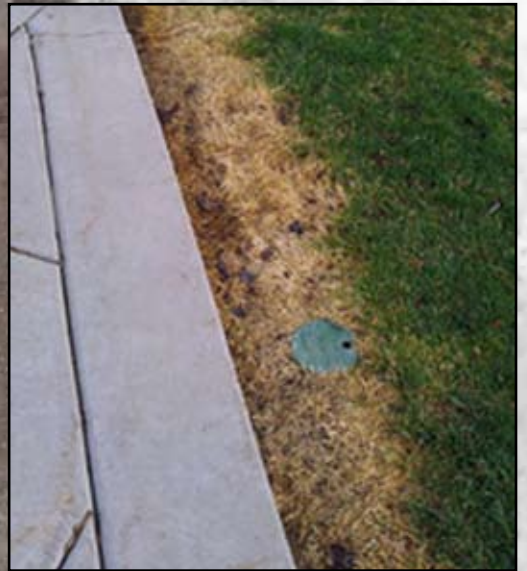


**When the snow is gone,
what will be left behind?**



OR



VERDE-CAL® G

**helps reduce salt
damage caused from
ice / snow melters.**



For more information on VERDE-CAL® G or other
VERDE-CAL® products, visit us at www.verde-cal.com.

800-394-1551
www.aquaaid.com
www.verde-cal.com

VERDE-CAL[®] G

Enhanced Gypsum

Calcium Sulfate (gypsum) is combined with **thCa™**, an organic complexing agent. **thCa™** makes the Calcium (Ca) in gypsum more readily available for soil or plant use without effecting or raising pH.

Relief From Ice Melt Damage

Verde-Cal G also helps flush the salt from ice melt products through the root zone so only minimal damage is seen to the turf in the spring. **Verde-Cal G** will allow for faster recovery of turf damaged by ice melt products. Seed establishment and sod rooting is also enhanced with a **Verde-Cal G** program.

FEATURES AND BENEFITS OF USING VERDE-CAL[®] G

- 500 pounds will yield results equivalent to 1 ton of typical gypsum.
- Leaches excessive amounts of Sodium (Na) and Magnesium (Mg) from soil colloids.
- Supplies Calcium (Ca) without raising pH.
- Helps loosen compacted, heavy clay soils.
- Supplies plant available Sulfur (S) in the sulfate form.
- Improves soil aeration and water percolation.
- Ideal for turf, shrubs, and flowers.
- Quicker response at lower rates. Requires 1/4 the rate of standard gypsum per application.

APPLICATION RECOMMENDATIONS

For continued optimal growing conditions, apply **VERDE-CAL[®] G** at 5 pounds per 1,000 ft² or 220 pounds per acre monthly through the growing season, or as needed. Soil test recommendations should be followed.

To correct high sodium or magnesium levels or to loosen clay soils, apply **VERDE-CAL[®] G** at 12 pounds per 1,000 ft² or 520 pounds per acre once or twice per growing season, or as needed. A follow up soil test is recommended and reapply, if needed, at optimal growing condition rate.

To correct high sodium levels on Greens and Tees or when using effluent water, apply **VERDE-CAL[®] G** at 10 pounds per 1,000 ft² every month during the growing season.

ICE MELT RECOVERY

Prior to first snowfall, apply **VERDE-CAL[®] G** at 10 pounds per 1,000 ft² to turf areas where ice melt products are anticipated to come in contact.

Upon spring thaw, apply **VERDE-CAL[®] G** again at 10 pounds per 1,000 ft² to the same turf areas as previously treated.



OR



Distributed by:



5484 S. Old Carriage Road
Rocky Mount, NC 27803
1-800-394-1551 • 252-937-4107
www.aquaaid.com